

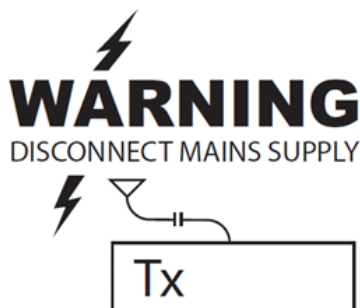
PANEL ANTENNA Installation Guide

Please Ensure, SAFETY AT ALL TIMES

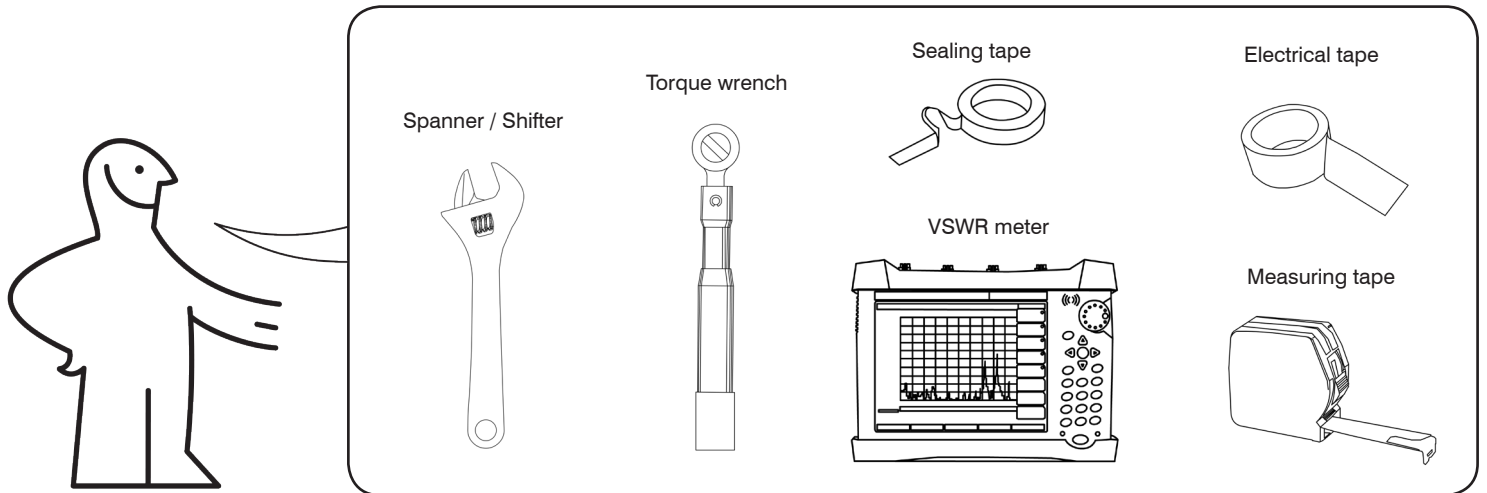


**DO NOT INSTALL NEAR POWER LINES,
TELEPHONE LINES AND GUY WIRES. THEY ALL
LOOK THE SAME SO ASSUME ANY WIRE OR
LINE CAN ELECTROCUTE YOU.**

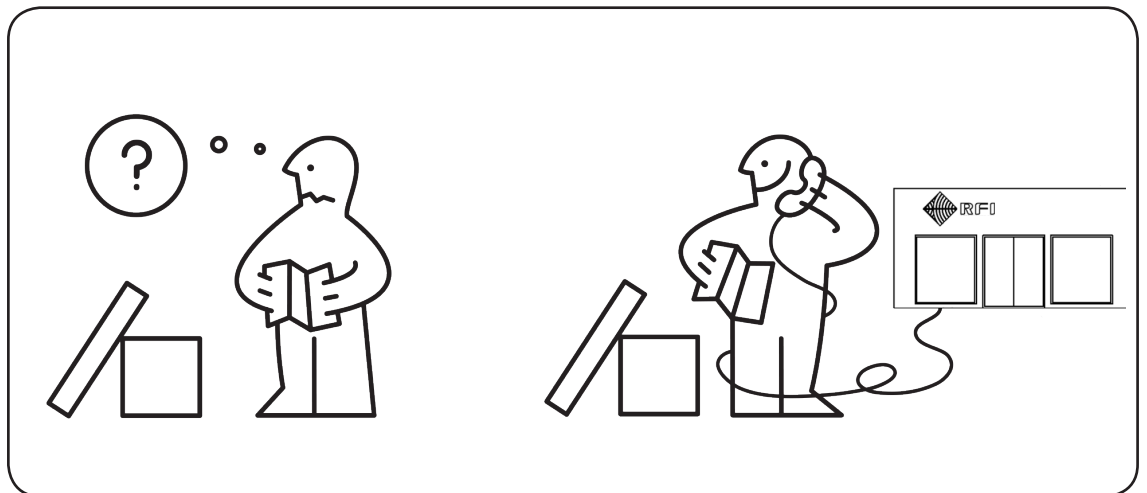
Disconnect all power to
transmitters related to the
installation.



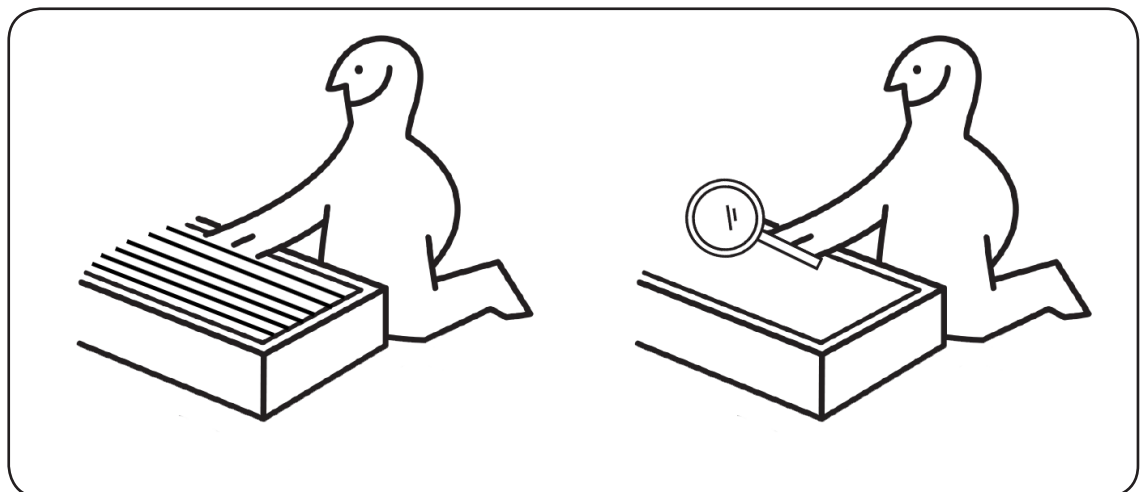
Tools and equipment that may be required:



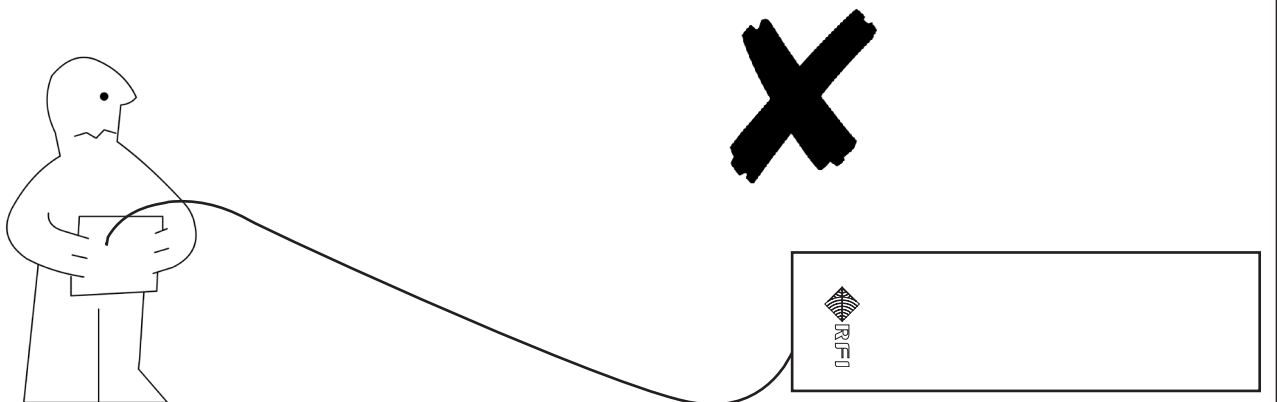
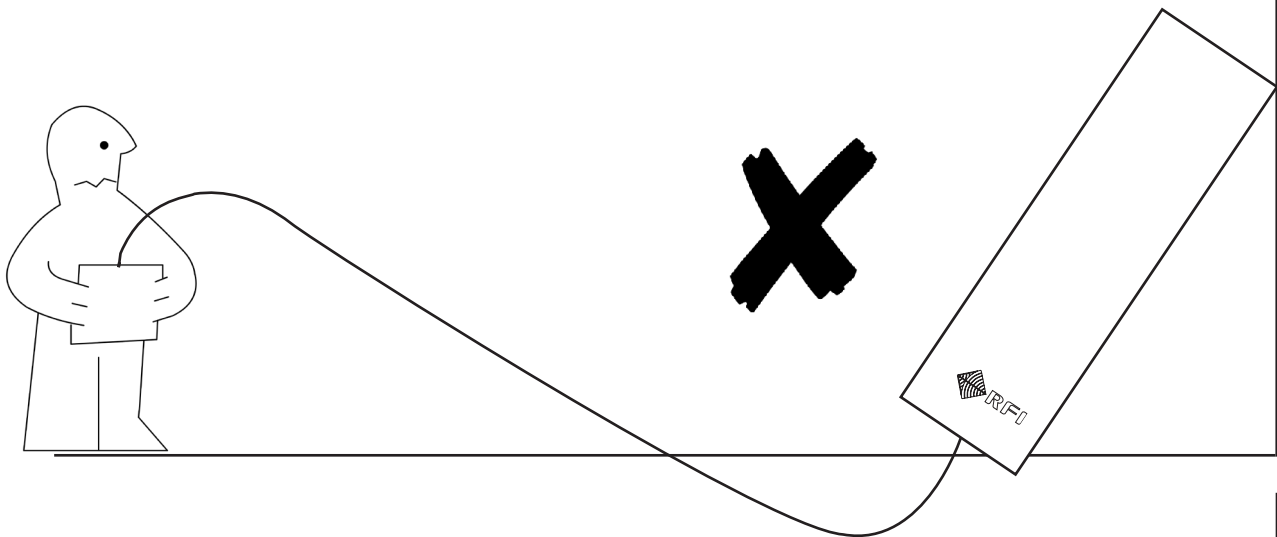
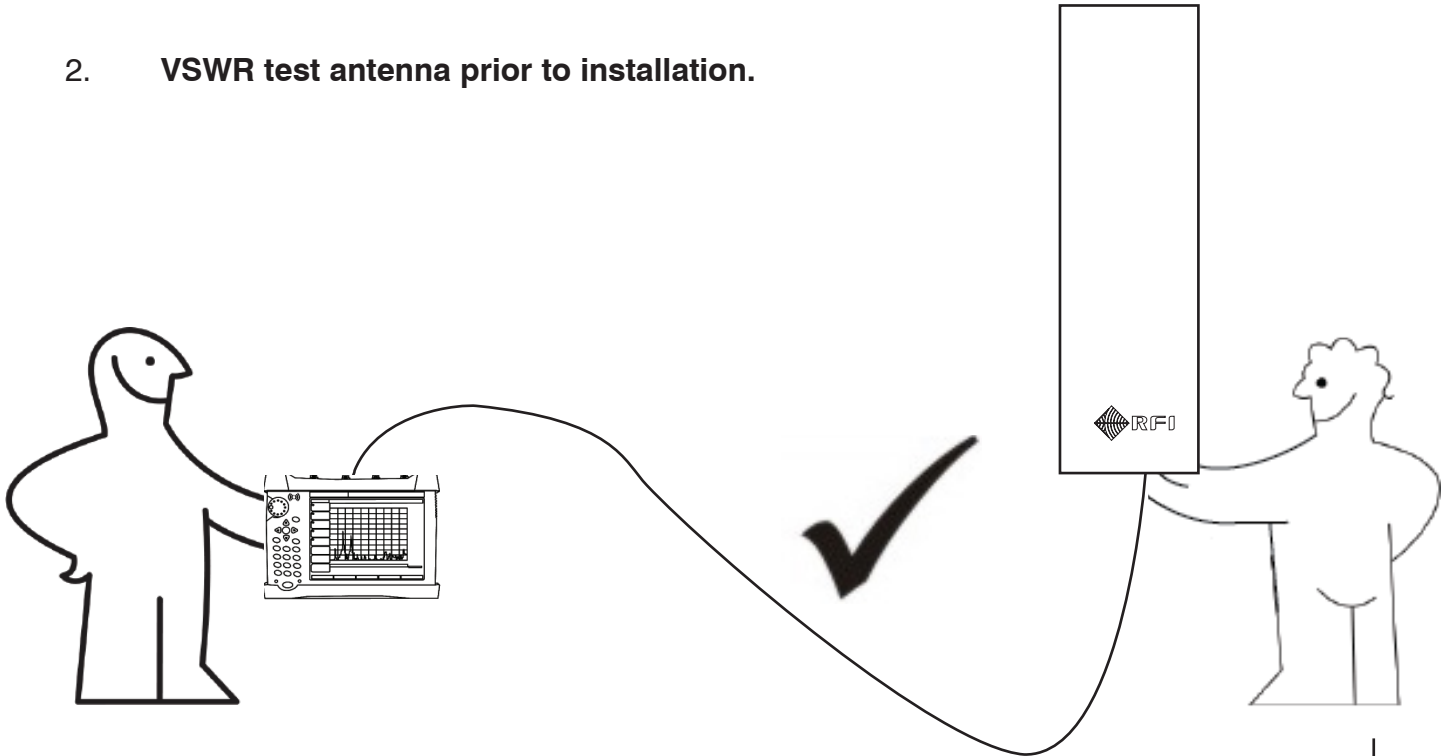
Any **QUESTIONS** contact your RFI representative.



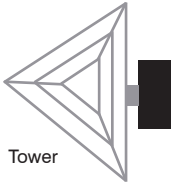

1. Open crate and **inspect** antenna for transport damage before removing from crate.



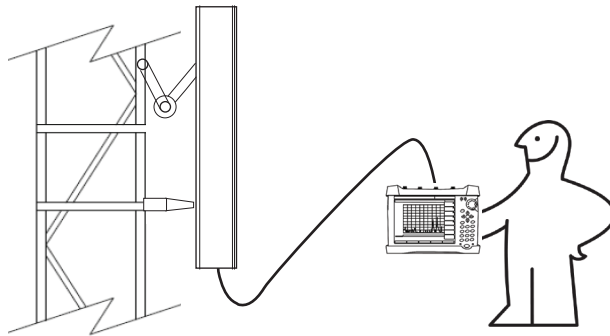
2. **VSWR test antenna prior to installation.**



3. **Mount antenna vertically, ensure antenna Connector is facing downward.**

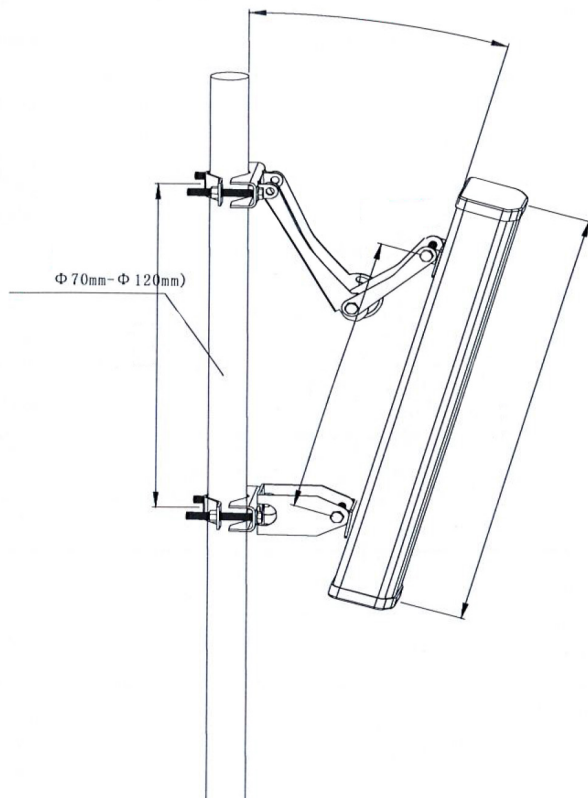
MOUNTING	GAIN DIRECTION
BPA Series	Away from panel front
	
Tower	

4. **VSWR test the antenna *after* mounting.**



VSWR <1.5:1
Full Band Coverage

Adjust for desired 0° to 10° downtilt

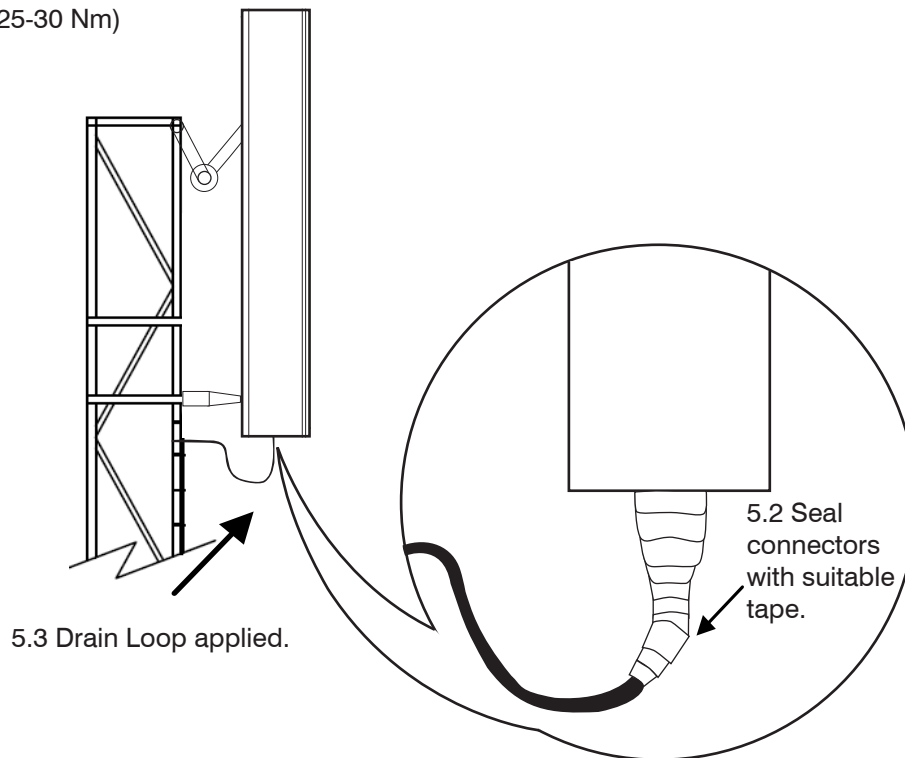


Installation Steps:

1. Before installing the antenna, the installation brackets/clamp assemblies should be attached to the antenna. Torque these bolts to 13.2 lbs.ft (18N.M.)
2. Install the antenna to the pole or mast using the supplied clamp/bolt assemblies. Torque the clamp bolts to 18.5 lbs.ft (25N.M.)
3. Adjust the downtilt bracket to achieve the desired antenna downtilt angle. When completed, torque the downtilt bracket hinge bolt to 18.5 lbs.ft (25N.M.)

5. Torque connector(s) and weatherproof. Drain loop must be applied.

5.1 Connector Torque
DIN = 18-22 lbs.ft (25-30 Nm)



6. Take installation photos and store with VSWR results with site records.

