

# Installation Sheet

FSA10-41-DIN

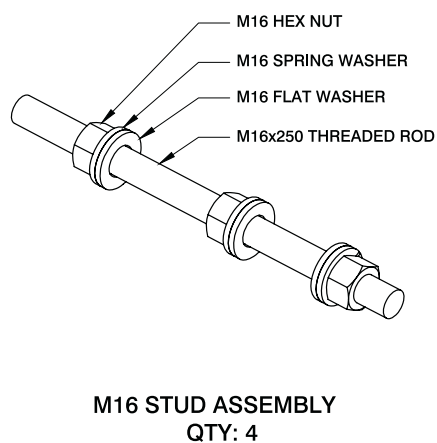
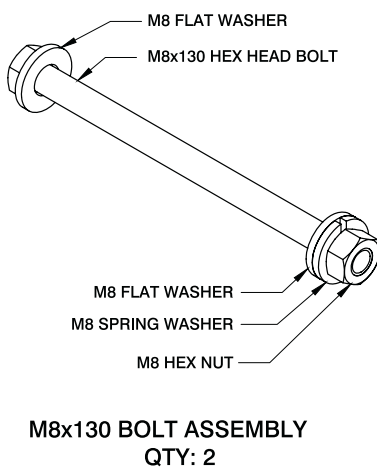
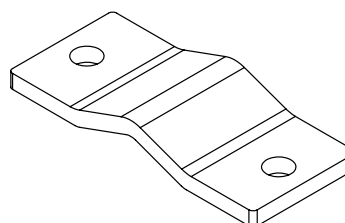
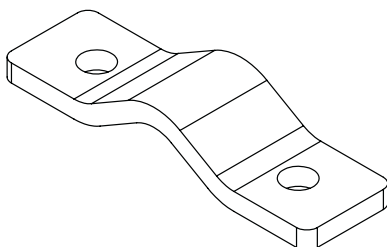
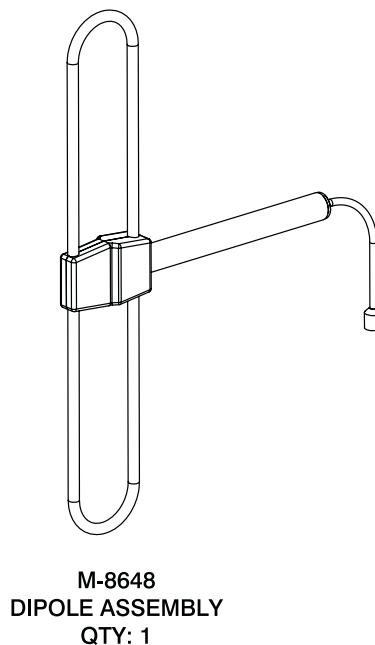
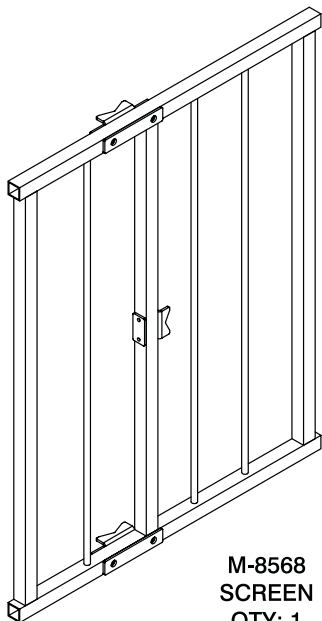
148-174 MHz



## COMPONENTS

### Assembly Instructions

Before assembling your antenna please ensure that all the components below are included in the kit.



# Installation Sheet

FSA10-41-DIN

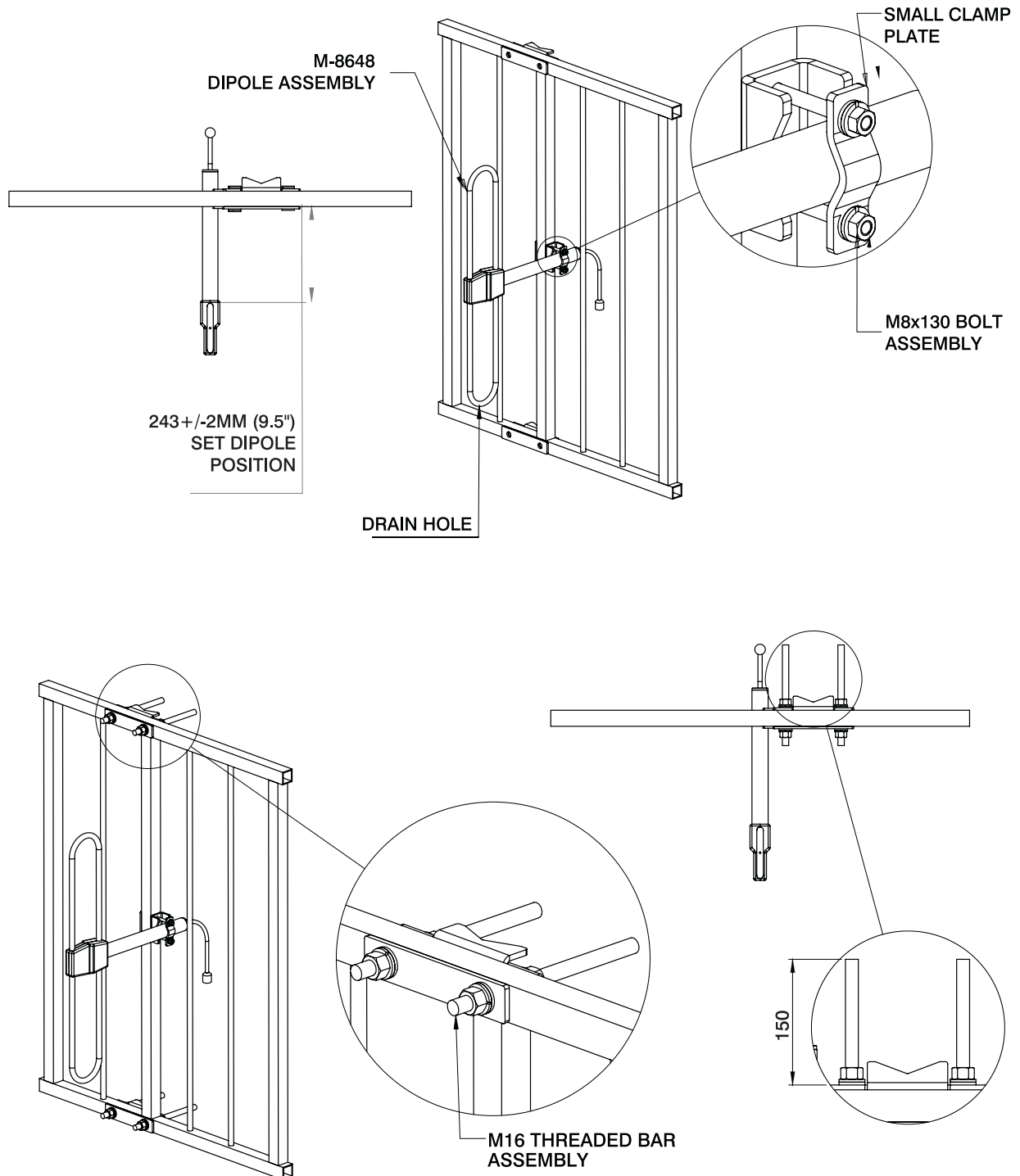
148-174 MHz



## STEP 1

ASSEMBLE THE DIPOLE TO THE SCREEN AS DEPICTED BELOW ENSURING THE DIPOLE TO SCREEN SPACING IS SET CORRECTLY AND THE DRAIN HOLE IS FACING DOWNWARDS.

USING 2 OF THE 4 LARGE CLAMP PLATES AND THE 4 M16 STUD ASSEMBLIES INCLUDED IN THE KIT. TIGHTEN THE M16 NUTS TO 70Nm (50 lbf.ft). LEAVE APPROXIMATELY 130mm PROTRUDING OUT THE BACK SIDE.



# Installation Sheet

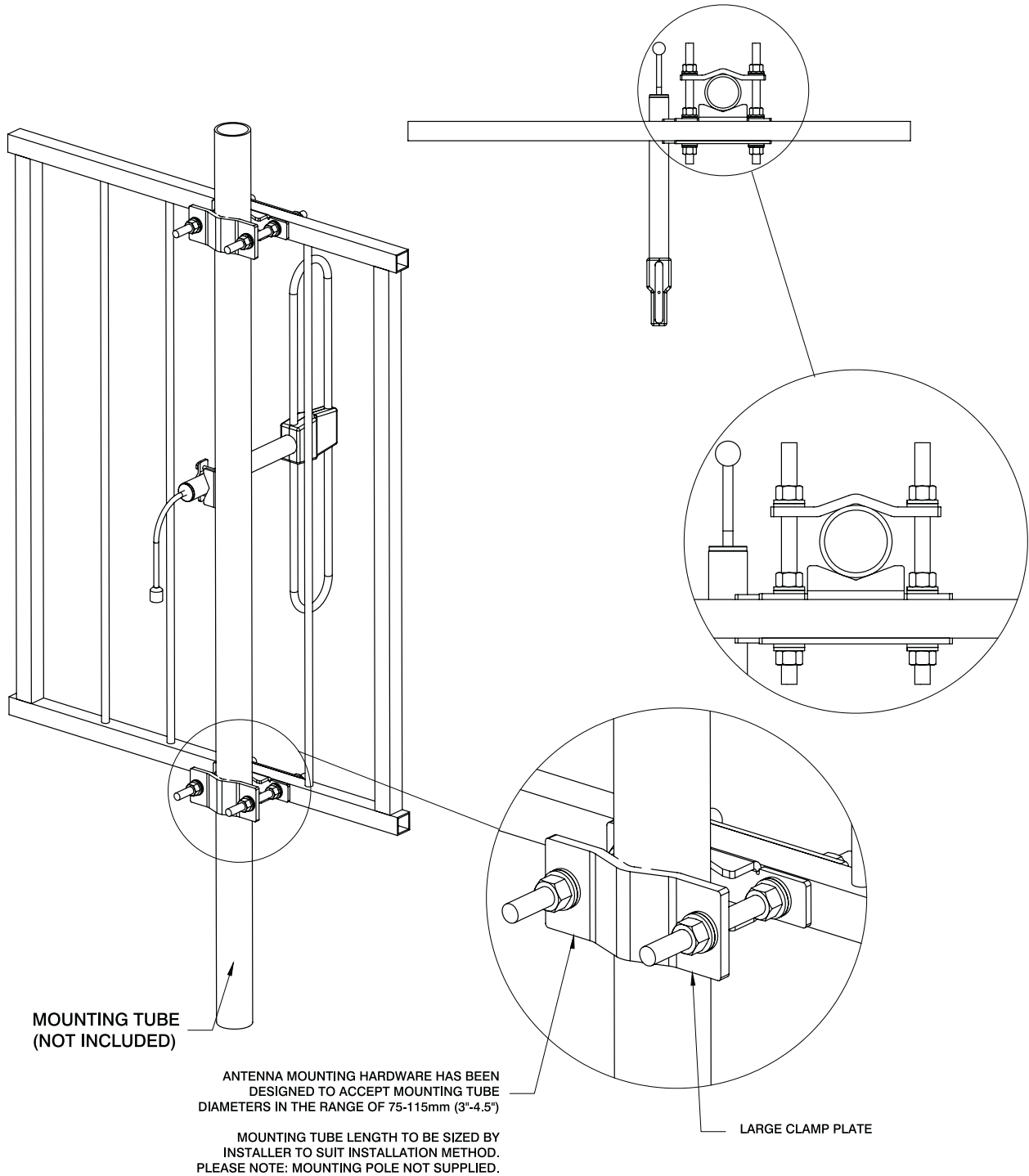
FSA10-41-DIN

148-174 MHz



## STEP 2

WITH THE ANTENNA ASSEMBLY LOCATED ON THE MOUNTING TUBE ATTACH THE 2 LARGE CLAMP PLATES AND TIGHTEN THE M16 NUTS CLAMPING THE ANTENNA ASSEMBLY TO THE MOUNTING TUBE. TIGHTEN TO 70Nm (50 lbf.ft)



# Installation Sheet

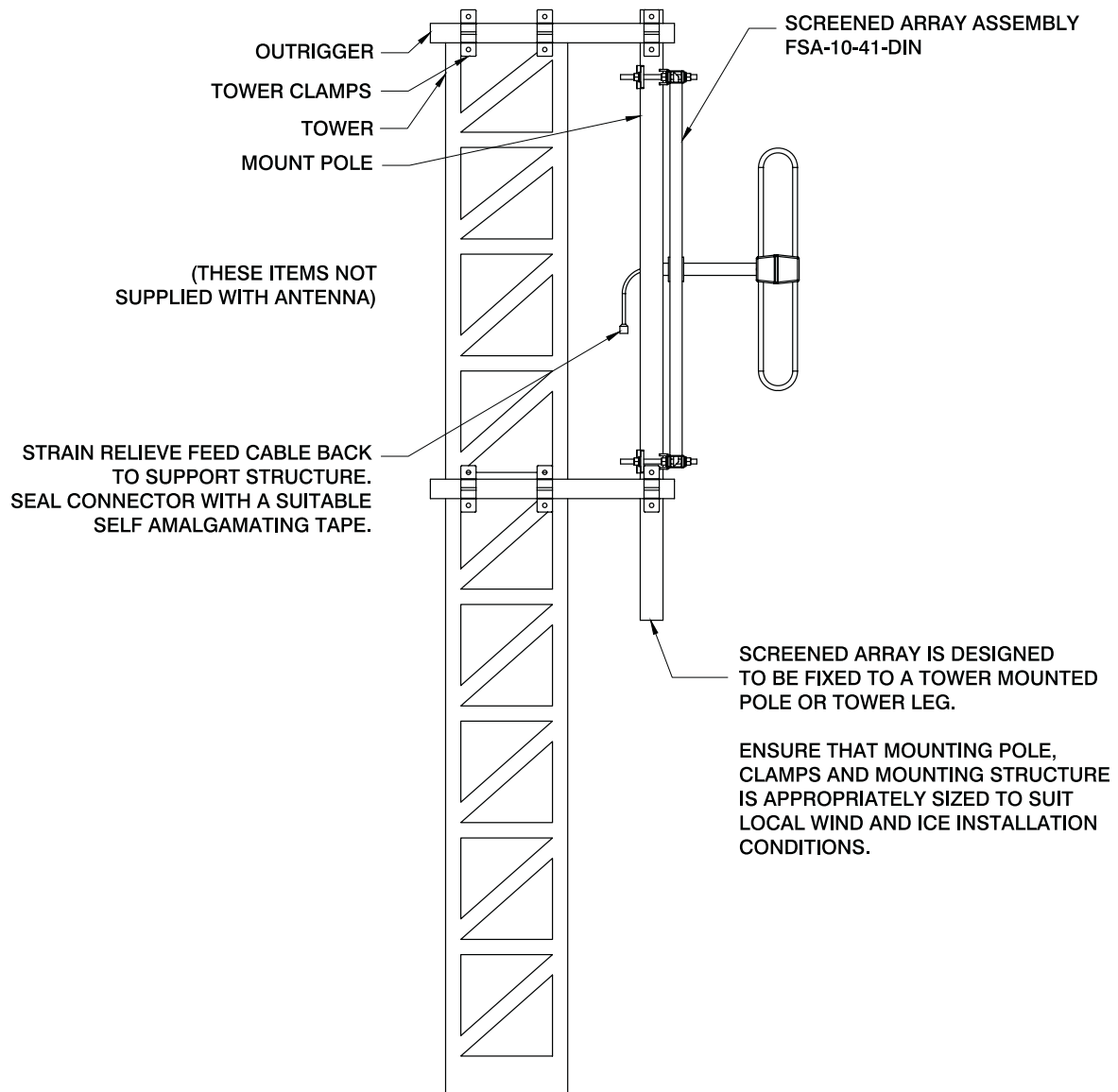
FSA10-41-DIN

148-174 MHz



## ASSEMBLY INSTRUCTIONS *continued*

### TYPICAL INSTALLATION



**TYPICAL  
INSTALLATION  
SIDE VIEW**