

# Duplexer

## Band Pass

### 380-400MHz

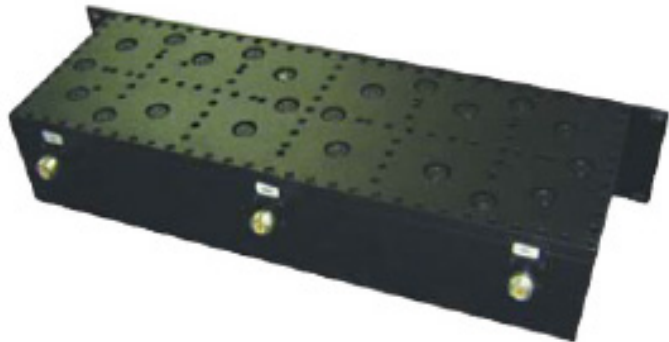
### DP3840-0807-32



RFI's range of compact multi-resonator milled aluminium band pass duplexers are ideal for use where space is restricted or at a premium. The good Tx to Rx port-to-port isolation and power capability make these ideal single channel duplexers for busy radio sites. The temperature stable resonators provide a wide operational temperature range ensuring important electrical specifications such as insertion loss and Tx port to Rx port isolation are maintained.

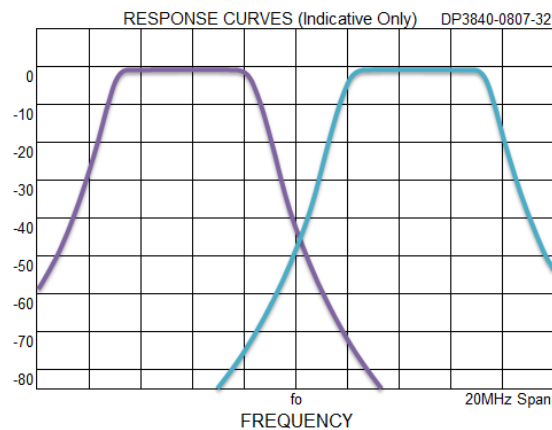
#### Features:

- 5MHz Pass Band Low & High ports
- 300W (CW) power rating
- Low insertion loss ripple
- 2RU 19" Rack mount front panel
- Typically 10MHz Tx to Rx Split
- 5MHz Tx to Rx Guard Band
- Compact temperature stable design



#### Specifications

Model Number	DP3840-0807-32
Type	Band Pass
Tuneable frequency range - Low Pass Port	380-390MHz
Tuneable frequency range - High Pass Port	390-400MHz
Pass Band - High and Low ports	5MHz
Tx to Rx Separation - typical	10MHz
Low & High Pass Port Insertion Loss - typical	$\leq 1.8\text{dB}$
Low & High Pass Port - ripple	$\leq 0.6\text{dB}$
Port to Port Isolation - typical	$\geq 70\text{dB}$
Input Power (CW) - max	300W
Impedance	50Ω
Return Loss / VSWR	$\geq 19\text{dB}$ / $\leq 1.25:1$
Termination Connectors	N (F)
Mounting Option	2RU 19" Rack mount front panel
Finish	Painted Black
Duplexer only dimensions (mm/inches excl connectors)	H 78 (3.07") x W 431 (16.97") x D 151 (5.94")
Duplexer with panel dimensions (mm/inches excl connectors)	H 89 (3.5") x W 483 (19") x D 151 (5.94")
Weight - approx	6.7kg / 14.7lbs
Temperature Range	-20° to +60° C / -4° to +140° F



Ordering Number	Description
DP3840-0807-32	Duplexer B.P. 380-400MHz, 5MHz PB, 10MHz T/R, 300W, 2RU