

SERVICE BULLETIN RMC-011

Product: Receiver Multicoupler

Subject: Firmware 1.63 Release

Date: 15th June 2018

Description

This Service Bulletin announces the release of baseline 1.63 firmware for the Receiver Multicoupler (RMC) series products.

The version 1.63 firmware update file ("FPP") is available for download from the RFI website, and it may be flashed into existing RMC models by following the *Maintenance – Firmware Update* process in the Graphical User Interface (GUI) or User Manual.

Product Enhancements

The version 1.63 firmware introduces the following new features and functionality to the Receiver Multicoupler (RMC) and Tower Top Amplifier (TTA) products;

- i) Support for Dual Receiver/Diversity Receiver Configurations

The RMC/TTA products are now available in configurations to support dual receiver/diversity receiver site equipment configurations.

In these applications a fully-redundant set of RMC and TTA equipment provides the two separate outputs for each channel's receivers.

The TTA Test port functionality is provided using a shared TEST coaxial feeder cable that is distributed between the two TTAs using a 2way coupler (the 'Test Port Coupler').

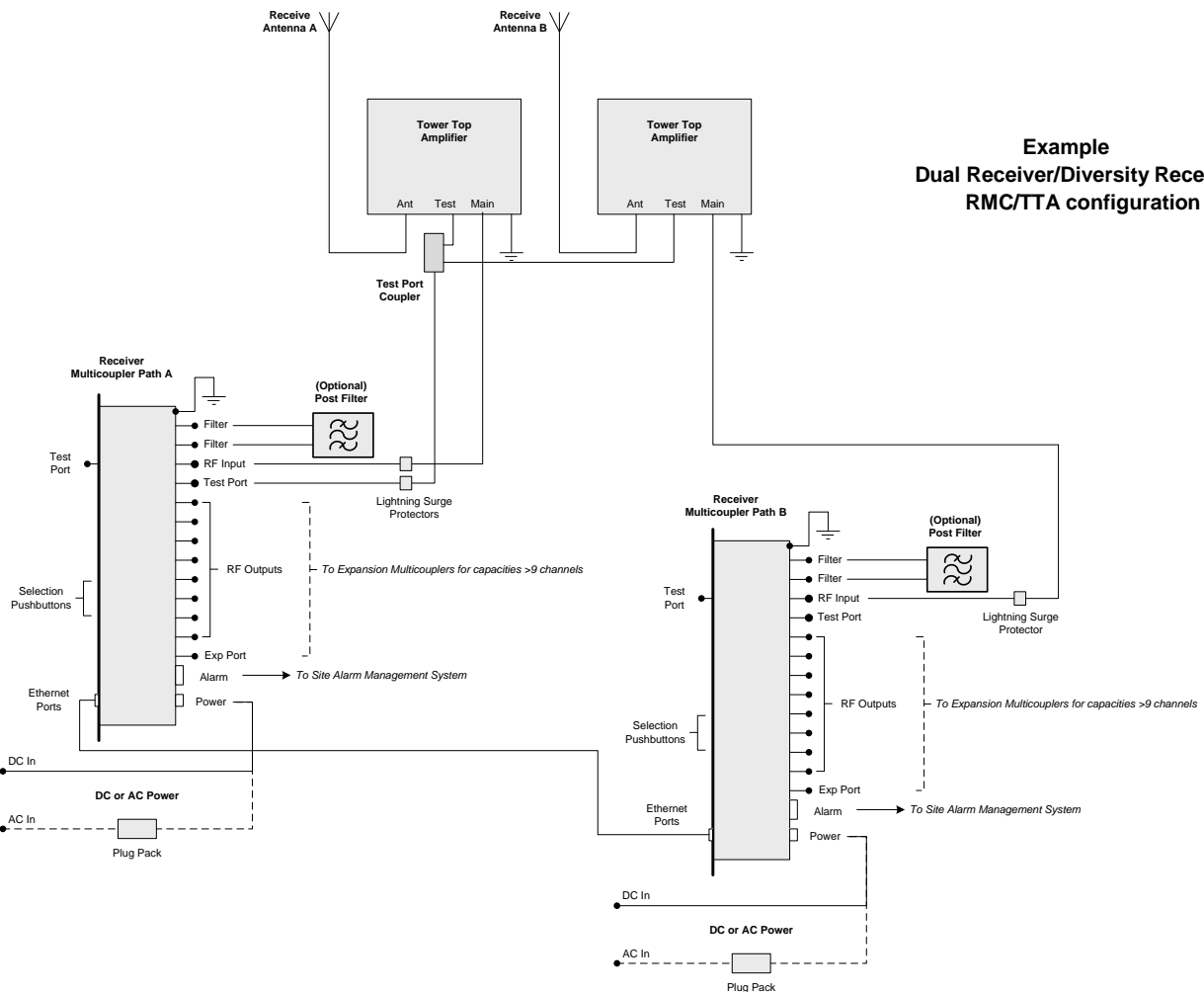
This version 1.63 firmware provides a Dual Receiver/Diversity Receiver selection in the GUI, changing the 30dB TTA Test port value to 33dB, compensating calculations for the inclusion of the Test Port Coupler in system.



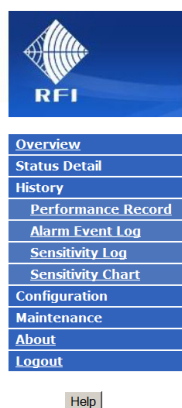
Tower Top Amplifiers



Receiver Multicouplers



A Dual Receiver/Diversity Receiver selection checkbox available in the GUI, changing the 30dB TTA Test port value to 33dB, compensating calculations for the inclusion of the Test Port Coupler in the system. In this GUI screen, note that an additional 1.5dB is included in the calculation of the *Total Test Loss* value shown. This 1.5dB represents the circuitry insertion loss in the Test signal path within the RMC itself.

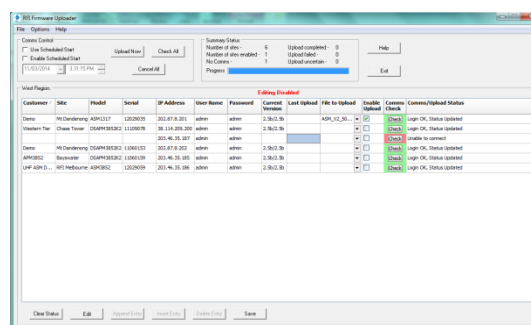


History - Performance Record	
Customer Name -	Police
Site Name -	Mt Carrie
Setting	Value
Test Cable Loss	4.0 dB
TTA Coupling Loss	30dB <input type="checkbox"/> Diversity/Dual Receiver
Total Test Loss	35.5dB
Static System Sensitivity	dBm
Measured at	810.00000 MHz
Effective Receiver Sensitivity (ERS)	dBm
Measured at	810.00000 MHz
<input type="button" value="Defaults"/> <input type="button" value="Discard Changes"/> <input type="button" value="Save"/>	
Copyright © 2012-2018 RF Industries Pty Ltd. All Rights Reserved	

Upgrading to Firmware 1.63

Note: Please read all Service Bulletins published from the release of the firmware currently operating in your RMC/TTA prior to commencing an upgrade to this version 1.63 firmware. Upgrades may require a transition through an intermediate firmware version on the way to reaching this version - or may have other implications for your RMC/TTA.

Automated firmware upgrades, the retrieval of currently installed firmware versions, site names, model numbers, serial numbers, and the testing of communications connectivity to a fleet of RMC/TTAs can be managed and actioned using the RFI Uploader software package.



Cost Impact

Firmware version 1.63 is available to RFI customers at no charge.

- END -