

Yagi Antenna

YW15-6989

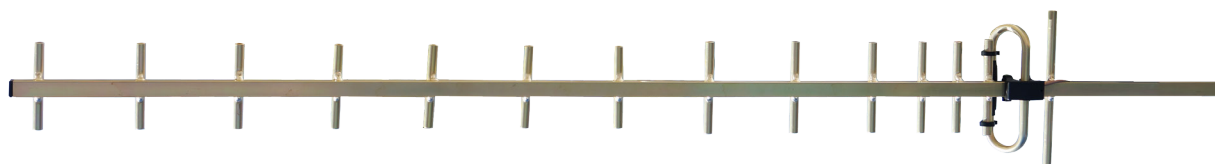
698-890 MHz



This high gain antenna provides a solution where operation within the 700/800MHz frequency bands. The broad bandwidth also provides network design consistency and benefits to users operating in multiple frequency band segments.

The unique dipole element design delivers excellent performance across the entire bandwidth, with consistently low VSWR and less pattern distortion than dual dipole designs. The passive elements are mounted to the square boom section and welded on both sides to minimise the potential for corrosion or the generation of passive intermodulation (PIM). The antenna rests at ground potential to provide excellent lightning protection and reduced precipitation static noise.

Applications include RF control, short or long haul links, control station combining and telemetry installations requiring a highly directional antenna in point-to-point and point-to-multipoint networks.



Features:

- Wide band coverage from 698MHz to 890MHz
- All welded construction for reliability
- Excellent front-to-back ratio
- Alodined conductive plating for performance reliability
- Designed to minimize the generation of PIM

Yagi Antenna

YW15-6989

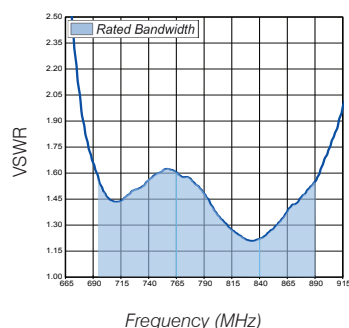
698-890 MHz



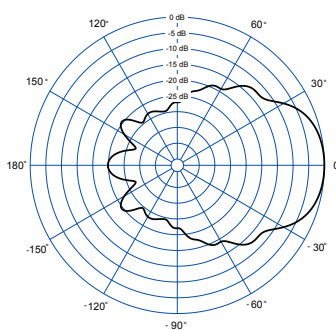
Electrical Specifications	
Model Number	YW15-6989
Nominal Gain dBd (dBi)	13.0 (15.1)
Frequency MHz	698 - 890
Tuned Bandwidth MHz	Full
VSWR	<1.8:1
Nominal Impedance Ω	50
Vertical Beamwidth $^{\circ}$	35
Horizontal Beamwidth $^{\circ}$	38
Front to Back Ratio (dB)	20
Power Watts	100

Mechanical Specifications		
Model Number		YW15-6989
External Construction		All welded aluminium with alodined finish
Length <i>inches</i>		61.1
Width <i>inches</i>		8.5
Weight <i>lbs</i>		2.2
Termination		1.6ft of RG142 fitted with N-Type (F) connector
Suggested Clamp		SBC-20
Projected Area <i>ft²</i>	No ice	1.0
	with ice	2.1
Lateral (Thrust) @ 100mph <i>lbs</i>		24
Wind Gust Rating <i>mph</i>		114
Torque @ 100mph <i>ft-lbs</i>		54

Typical VSWR Response (CC450-06)



Typical -E Plane



Typical -H Plane

