

# Installation Sheet

## 0.6m Grid Antenna Instructions



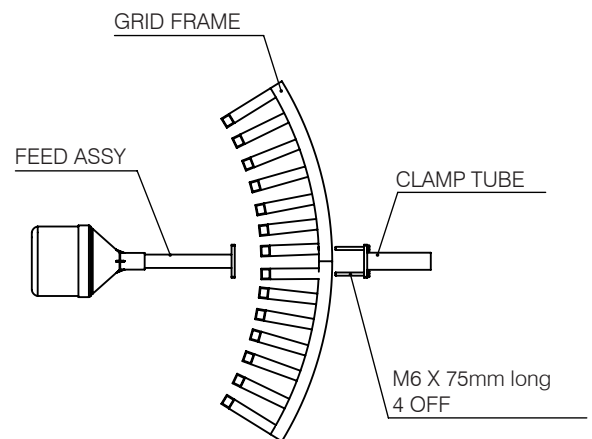
### Kit Includes

Clamp kit and rear standoff / Grid reflector / Antenna feed

### Assembly

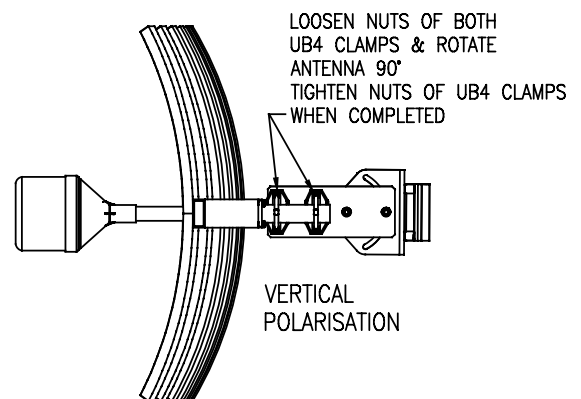
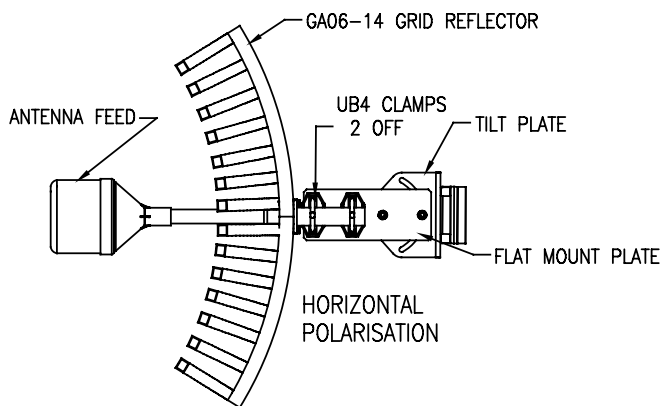
Four sets of bolts, nuts and washers are used to assemble both the feed and the rear standoff to the grid via the holes provided. The cable/connector must be fed through the rear standoff.

The rear standoff is used to mount the clamp assembly to the grid.



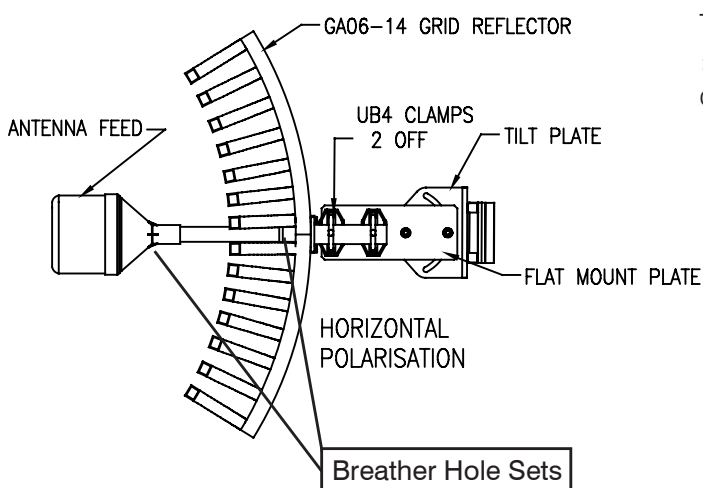
### Polarisation

The GA06 can be mounted either vertically or horizontally polarised by adjusting loosening the UB4 clamps at the rear and rotating the whole complete grid and feed assembly into position for the required orientation.



There are also 2 breather holes located in 2 separate positions, one set at the radome end and one set at the base of the launcher arm.

Plugs are pre-inserted to block all holes. Please remove respective plugs to suit final polarisation – ie. Remove plug to produce holes facing down.



### Tilt and pan

To tilt, loosen the nuts shown below to tilt up or down max  $\pm 45^\circ$ , and to pan, loosen mount clamp and shift position of complete installation by required amount.

