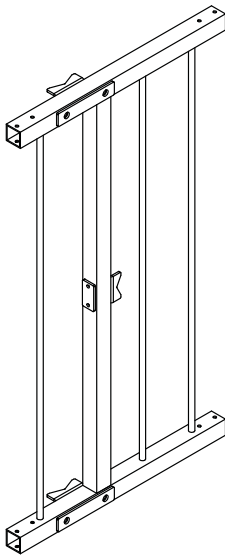


CSA10-41-DIN

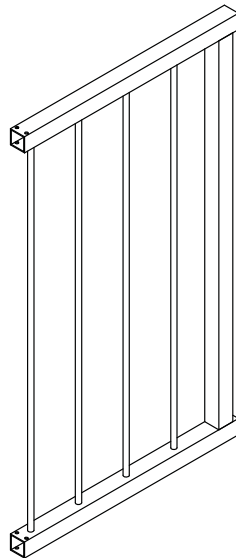
ASSEMBLY INSTRUCTIONS

COMPONENTS

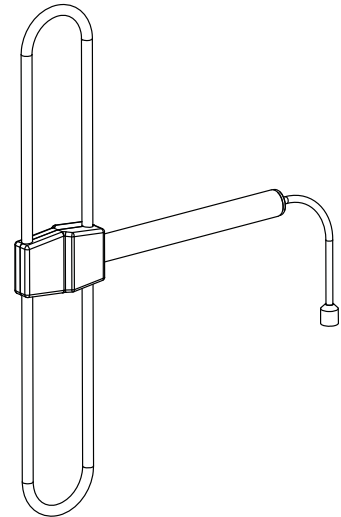
Before assembling your antenna please ensure that all the components below are included in the kit.



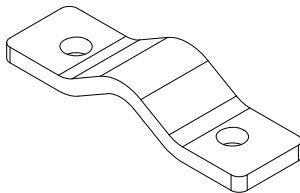
**M-8569
CENTRE SCREEN
QTY: 1**



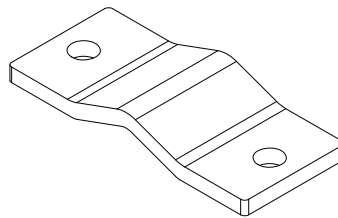
**M-8569
SIDE SCREENS
QTY: 2**



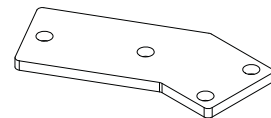
**M-8648
DIPOLE ASSEMBLY
QTY: 1**



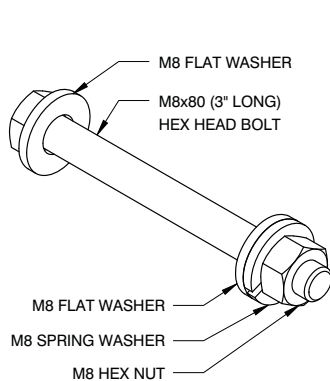
**SMALL CLAMP PLATE
QTY: 1**



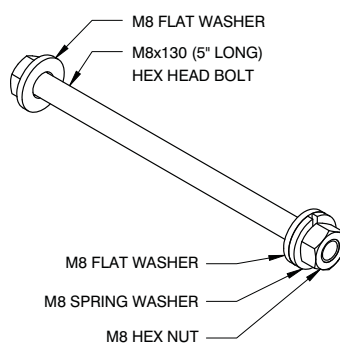
**LARGE CLAMP PLATE
QTY: 2**



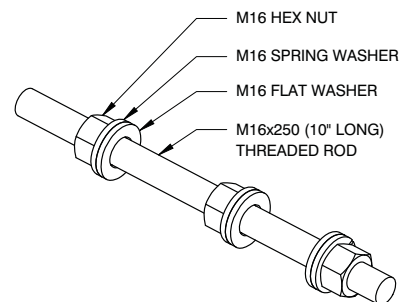
**CORNER BRACKET
QTY: 8**



**M8x80 BOLT ASSEMBLY
QTY: 16**



**M8x130 BOLT ASSEMBLY
QTY: 2**



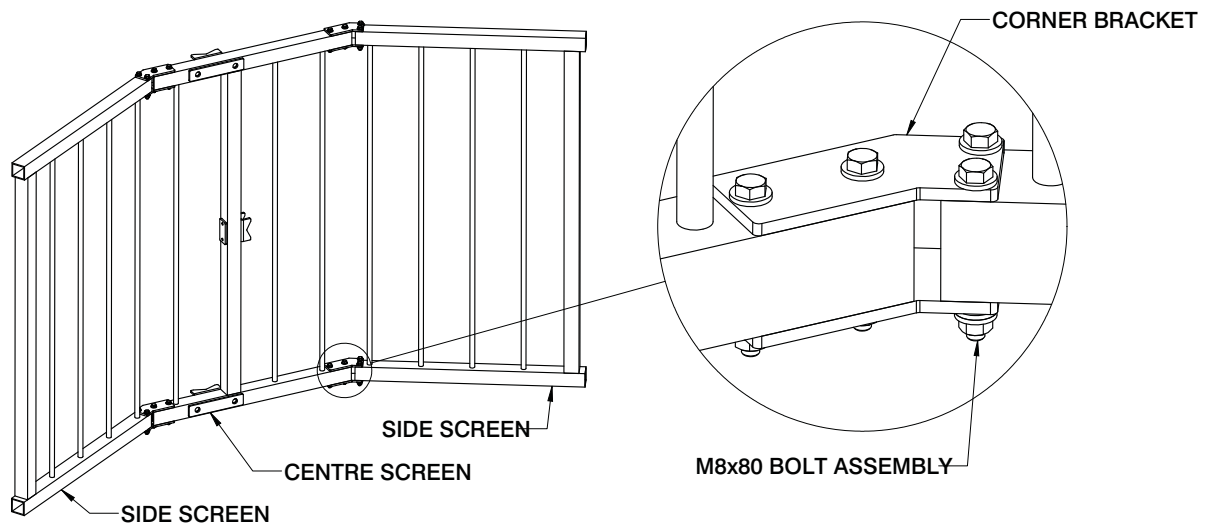
**M16 STUD ASSEMBLY
QTY: 4**

CSA10-41-DIN

ANTENNA ASSEMBLY

STEP 1:

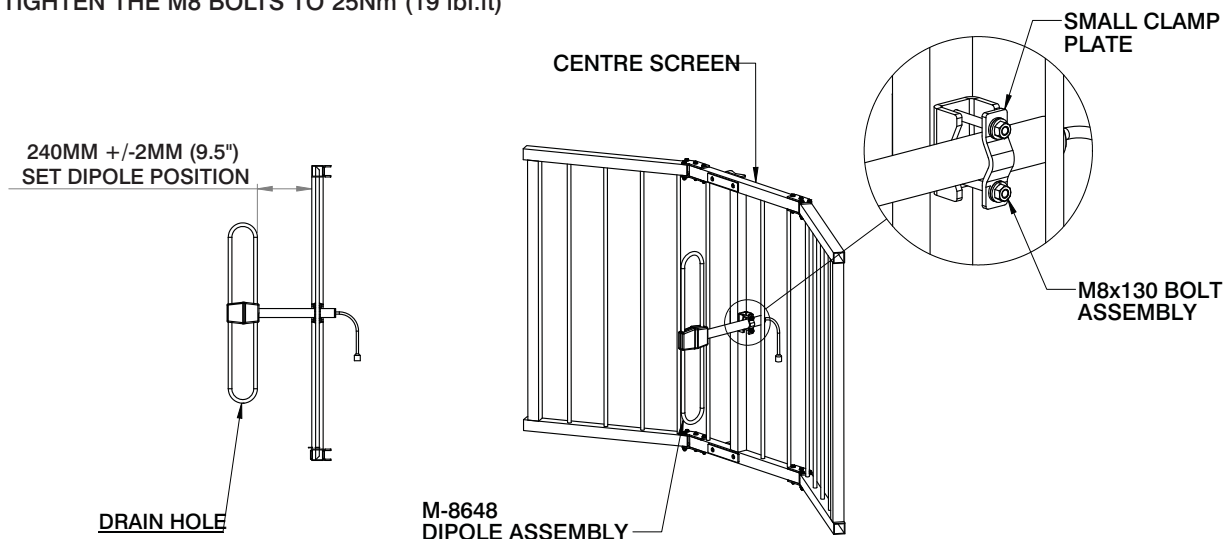
ASSEMBLE SIDE SCREENS TO CENTRE SCREEN AS PICTURED BELOW USING THE M8 BOLT ASSEMBLY AND CORNER BRACKETS INCLUDED IN THE KIT. TIGHTEN M8 BOLTS TO 25NM (19 lbf.ft)



STEP 2:

ASSEMBLE THE DIPOLE TO THE CENTRE SCREEN AS DEPICTED BELOW ENSURING THE DIPOLE TO SCREEN SPACING IS SET CORRECTLY AND THE DIPOLE DRAIN HOLE IS FACING DOWNWARDS.

USING THE SMALL CLAMP PLATE AND THE 2 M8 x 130 HEX BOLT ASSEMBLIES INCLUDED IN THE KIT. TIGHTEN THE M8 BOLTS TO 25Nm (19 lbf.ft)

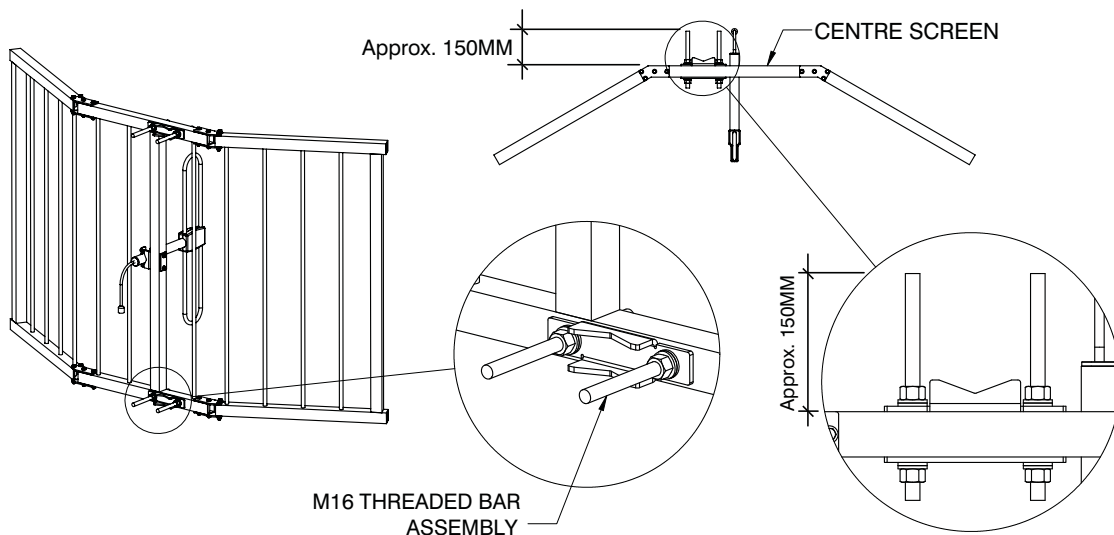


CSA10-41-DIN

ASSEMBLY INSTRUCTIONS *continued*

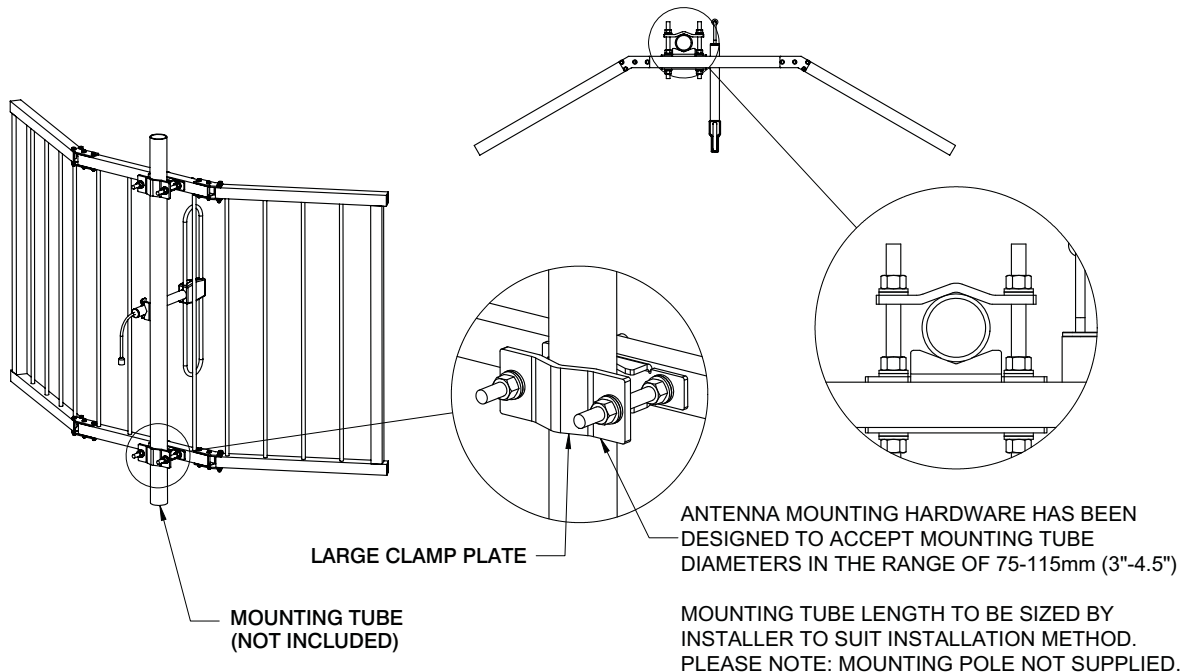
STEP 3:

FIT THE 4 M16 THREADED ROD ASSEMBLIES TO THE CENTRE SCREEN AS DEPICTED BELOW. LEAVE APPROXIMATELY 150mm (6") PROTRUDING OUT THE BACK SIDE. TIGHTEN TO 70Nm (50lbf.ft)



STEP 4:

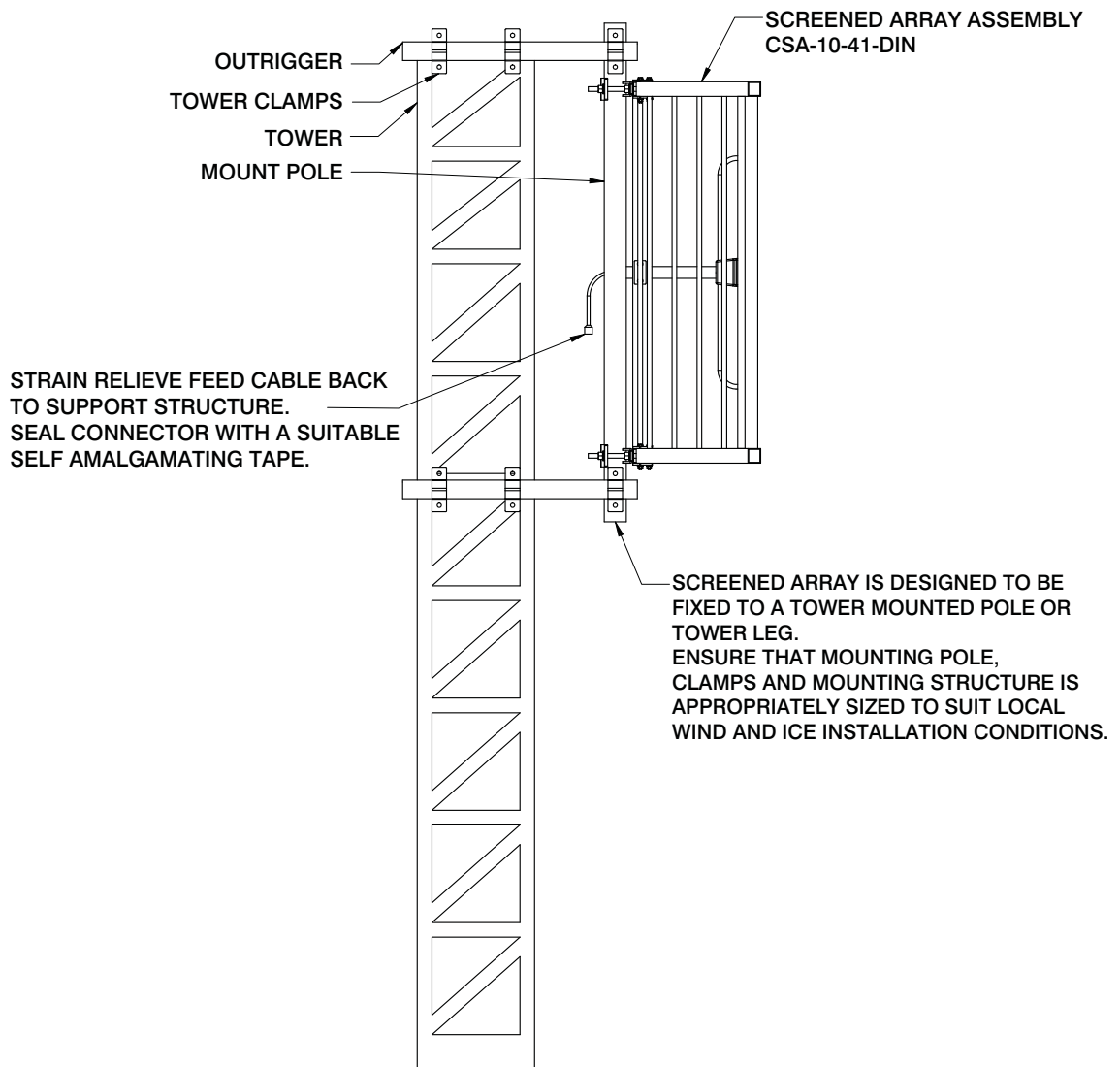
WITH THE ANTENNA ASSEMBLY LOCATED ON THE MOUNTING TUBE ATTACH THE 2 LARGE CLAMP PLATES AND TIGHTEN THE M16 NUTS CLAMPING THE ANTENNA ASSEMBLY TO THE MOUNTING TUBE. TIGHTEN TO 70Nm (50 lbf.ft)



CSA10-41-DIN

ASSEMBLY INSTRUCTIONS *continued*

TYPICAL INSTALLATION



**TYPICAL
INSTALLATION
SIDE VIEW**