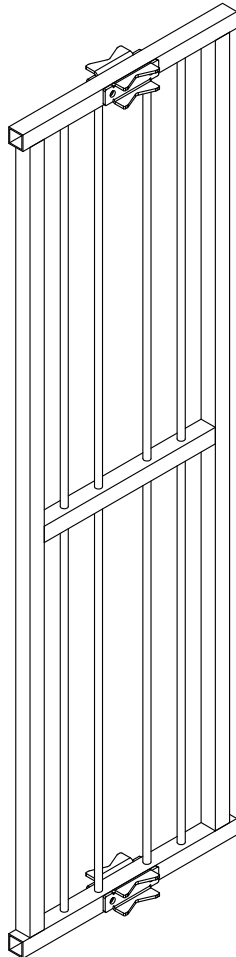


## FSA40-67-DIN

### ASSEMBLY INSTRUCTIONS

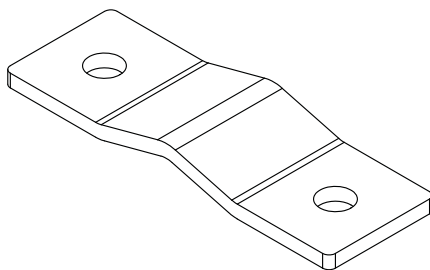
Before assembling your antenna please confirm all the components below are included in the kit.



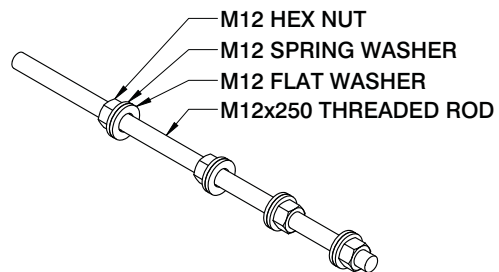
**M-8563  
SCREEN  
QTY: 1**



**0A-40-67-DIN  
DIPOLE ASSEMBLY  
QTY: 1**



**LARGE CLAMP PLATE  
QTY: 4**

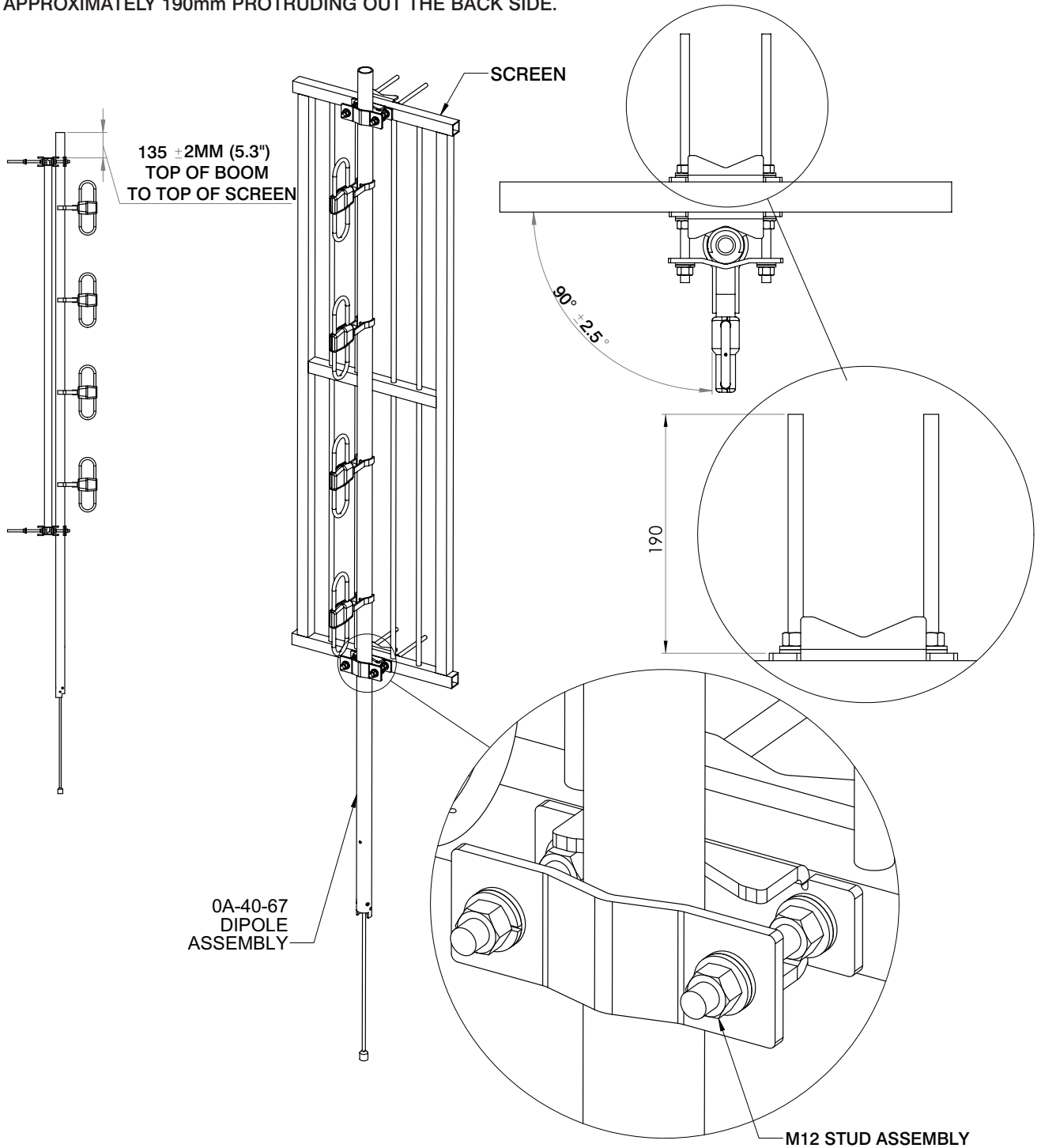


**M12 STUD ASSEMBLY  
QTY: 4**

## FSA40-67-DIN

### ANTENNA ASSEMBLY STEP 1:

ASSEMBLE THE DIPOLE TO THE SCREEN AS DEPICTED BELOW USING 2 OF THE 4 LARGE CLAMP PLATES AND THE 4 M12 STUD ASSEMBLIES INCLUDED IN THE KIT. TIGHTEN THE M12 NUTS TO 55Nm (40 lbf.ft). LEAVE APPROXIMATELY 190mm PROTRUDING OUT THE BACK SIDE.

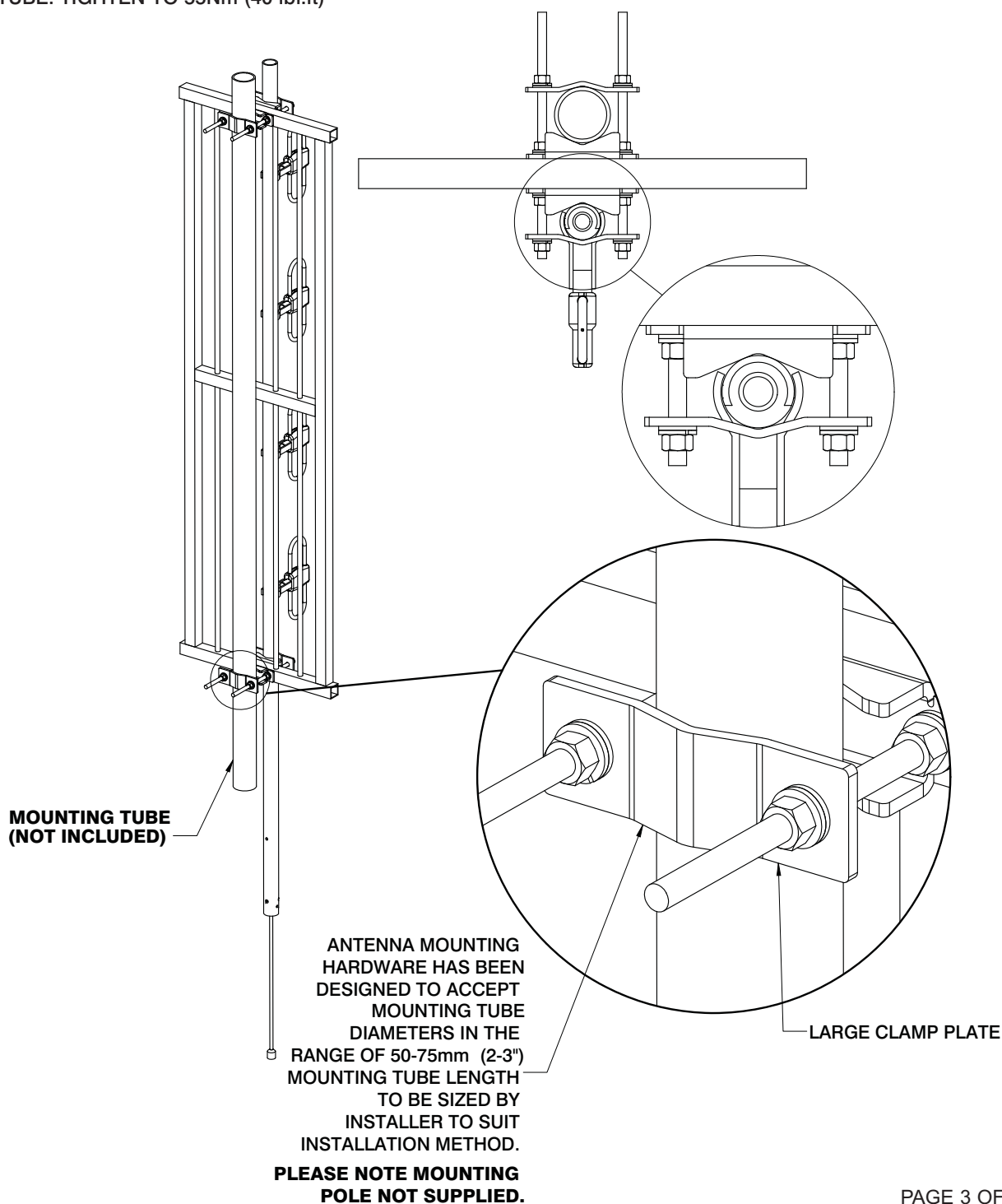


## FSA40-67-DIN

### ASSEMBLY INSTRUCTIONS *continued*

#### STEP 2:

WITH THE ANTENNA ASSEMBLY LOCATED ON THE MOUNTING TUBE ATTACH THE REMAINING 2 LARGE CLAMP PLATES AND TIGHTEN THE M12 NUTS CLAMPING THE ANTENNA ASSEMBLY TO THE MOUNTING TUBE. TIGHTEN TO 55Nm (40 lbf.ft)



## FSA40-67-DIN

### ASSEMBLY INSTRUCTIONS *continued*

### TYPICAL INSTALLATION

