

# Ruggedised UHF Yagi Antennas

300-600 MHz

RDA16 Series



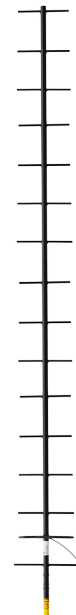
The RDA16 Series are ruggedised high gain yagi antennas which will provide excellent point to point communication in extreme climatic environments. RDA Series antennas exhibit narrow beamwidths and high front to back ratios to help minimise any potential interference to and from other radio systems.

Built specifically for hostile conditions, the boom and the elements of the RDA Series yagis are significantly larger and more robust than on the standard YB range.

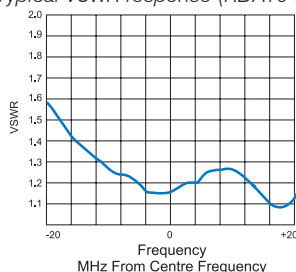
Termination is via an 'N' female coaxial connector fitted to a short Durathene cable tail. Durathene is a PTFE dielectric and polyethylene jacketed cable providing superior resistance to weathering and abrasion and is less susceptible to bird attack than standard PVC sheathed cables.

## Features:

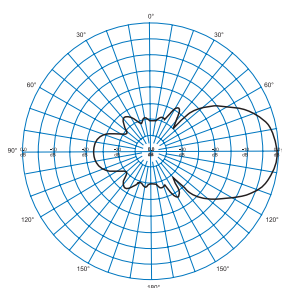
- All welded construction for maximum and reliable performance
- High front to back ratios - reducing interference to and from other systems
- Black powder coating aids in snow and ice shedding by maximising solar heat retention
- Ruggedised construction for use in extreme conditions
- Can be configured in stacks or bays for higher gain applications using PH and PHE series phasing harnesses
- DC grounding on all elements for the ultimate in lightning protection and dissipation of static noise



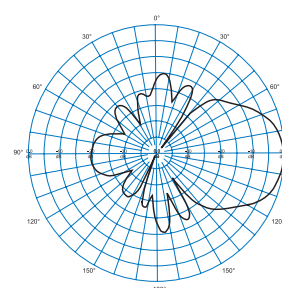
Typical VSWR response (RDA16-99)



RDA16-99 - E Plane



RDA16-99 - H Plane



## Electrical

Model Number	RDA16-65	RDA16-70	RDA16-71	RDA16-63	RDA16-72	RDA16-99
Nominal Gain dBi (dBd)	14 (12)					
Frequency MHz	400 - 420	450 - 470	470 - 490	480 - 500	500 - 520	350 - 600
Tuned Bandwidth	Full band					4.0%
VSWR /Return Loss	<1.5 :1 (14dB)					
Nominal Impedance $\Omega$	50					
Vertical Beamwidth°	35					
Horizontal Beamwidth°	36					
Front / Back Ratio dB	20					
Input Power W	250					

## Mechanical

Model Number	RDA16-65		RDA16-70	RDA16-71	RDA16-63	RDA16-72	RDA16-99
Construction	All welded aluminium with black powder coated finish. See note (1)						
Length <i>m</i>	2.5	2.3	2.3	2.2	2.2	2.9	
Weight <i>kg</i>	2.2	1.9	1.8	1.9	1.8	2.5	
Termination	N female with short 9302 cable tail						
Mounting Area	100mm x 32mm diam. powder coated aluminium						
Suggested Clamps	1 x UCR1 + 1 x M-4528 bracing kit						
Projected Area <i>cm</i> <sup>2</sup>	No ice	1448	1281	1261	1212	1202	1730
	With ice	3245	2894	2843	2741	2695	3814
Wind Load (Thrust) @ 160km/h <i>N</i>	172	152	149	144	142	205	
Wind Gust Rating <i>km/h</i>	174	195	195	205	205	147	
Torque @160 km/h <i>Nm</i>	202	159	157	144	142	285	

(1) RDA series yagis may be ordered in alternative unpainted, plain alodined aluminium finish. Specify "RDB" prefix.